

30kVA External Static Switch for DAC60000 Dual Inverters

BPU69000 DUAL 30kVA



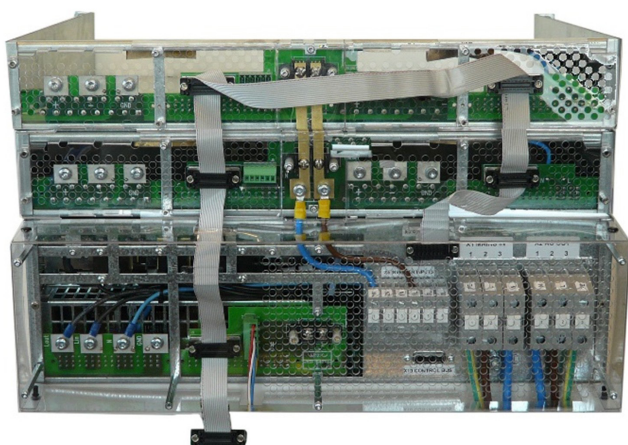
Features

- » Small size, light weight, standard 19" rack
- » On-line/off-line configurations, user changeable during operation
- » Fast switching, user programmable reaction time for optimized system performance
- » Large user programmable synchronization range
- » Continuous microprocessor based internal monitoring and diagnostics
- » Remote monitoring through RS-232 with standard PC

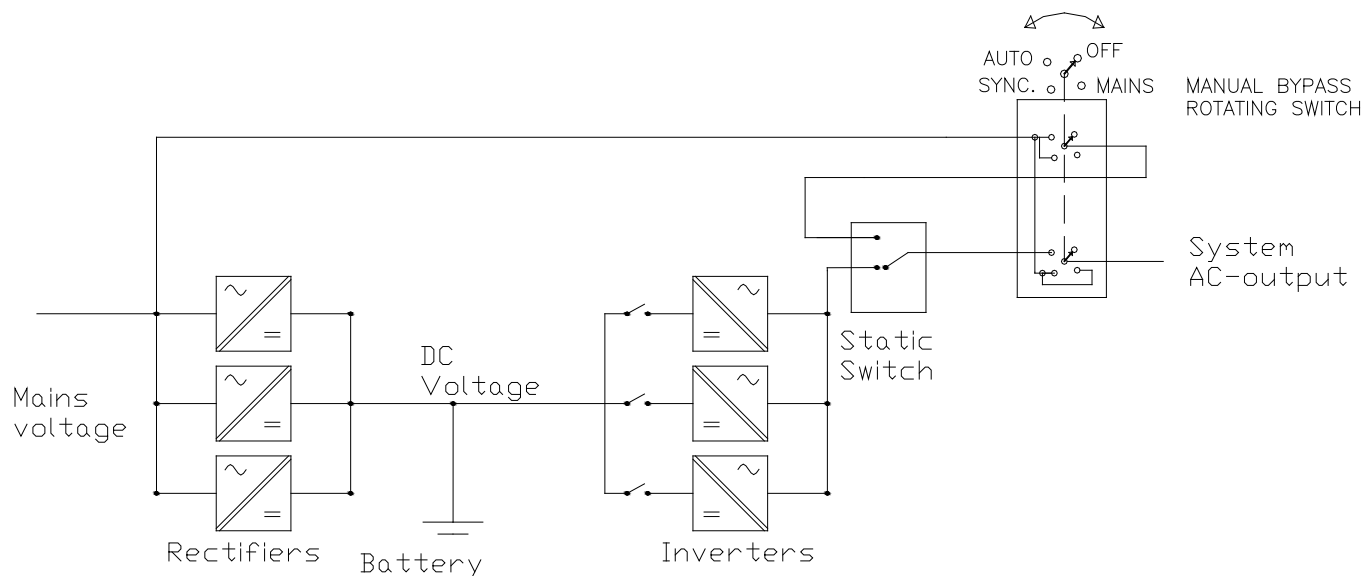
Certifications



Use cases



Modular Inverter system 1 500VA ... 30 000VA
2 x 1500VA inverter modules in 19" 1.5U
Static Switch and Manual Bypass in 19" 3U
Redundant n+1 system, hot swap plug-in modules



STATIC SWITCH (BYPASS) MODULES

Type	Nominal Voltage	Frequency Range	Nominal Power	Max continuous Current	Max off-line short time peak current	Cooling	Dimensions Without Handles	Weight
BPU69430FR	230VAC	40-70Hz	30kVA	125A	5000 A/10 ms, 400A/0,3 s, 200 A/1min	Forced, fan	220x131x400 mm	8.4 kg

19" 3U POWERFRAME (sub-rack) INCLUDING MANUAL BYPASS

Type	Description
MBP68400	Sub-rack including manual bypass and position for static switch, 19" x 3U x 480mm, weight 11.6kg

User programmable parameters:

- » Online/Offline configuration
- » Minimum and maximum inverter RMS voltage conformity
- » Minimum and maximum mains RMS voltage conformity
- » Minimum and maximum mains frequency conformity
- » Maximum allowed mains frequency change rate
- » Load level to return to inverter supply after overload
- » Delay to switch to inverters at rapid mains blackout or over voltage (min. 1ms)
- » Delay to switch to mains at rapid inverter blackout or over voltage (min. 1ms)

SPECIFICATION

ELECTRICAL

Operation voltage range	80 - 270 VAC
Synchronizing frequency range	40-70 Hz (user programmable)
Protection, external fuse in mains AC input	MCB 125A B-, C- or D-curve or gG fuse 125A
Efficiency at full load	> 99 % @ 230VAC
Overloading capability (off-line)	5000 A/10 ms, 400 A/0,3 s, 200 A/1 min

MECHANICAL

Enclosure	Steel casing IP20
Connectors in bypass module's rear panel	Plug-in connectors
Connectors in powerframe's rear panel	Mains Input and AC output, 25mm ² screw terminals (L-N-PE) (up to 35 mm ² with solid wires) 3 x Inverter AC input, 10mm ² screw terminals (L-N)

ENVIRONMENTAL

Operating temperature	0...50 °C full power, 50...60 °C reduced power
Cooling	Forced cooling front to rear, 2 fans inside the module. Fans are redundant, one fan is enough for cooling in normal conditions.

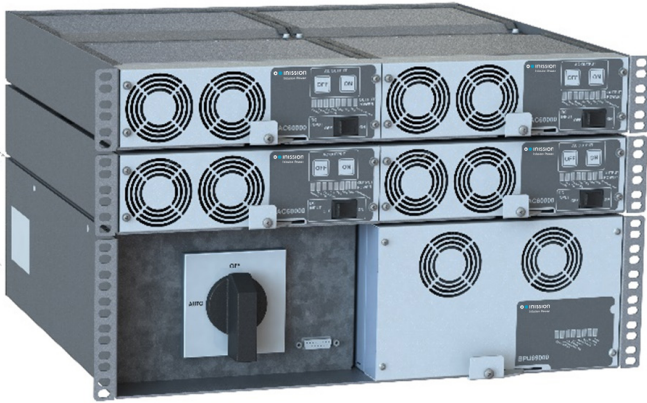
STANDARDS

Safety	EN 60950-1
EMC	EN 55022B, EN61000-6-3, EN61000-6-2 or EN61000-6-1 <small>(EN61000-4-3 radiated immunity according to EN61000-6-1 other immunity standards EN61000-6-2)</small>

ALARMS AND INDICATORS

LED indications	Overload – Fault - Mains failure - Mains in use - Inverter failure - Inverter in use – Synchronized - Communication
Relay alarms	Fault in system Primary supply failure
Remote monitoring through RS-232	

SYSTEM SOLUTIONS AND AC-DISTRIBUTION



Complete Inverter System

Up to 18 pcs of 1500VA inverters max 27kVA can be installed in parallel including external static switch and manual bypass. Static switch/manual bypass power frame and inverters are installed on top of each other in 19" cabinet

Ordering information:
See separate datasheets